



**MAGNETI
MARELLI**

checkstar
SERVICE NETWORK

ReTIS Truck

HaynesPro

Powered by:
HaynesPro
Clearly better data.



Magneti Marelli ReTIS Truck

ReTIS Truck allows you to service trucks and trailers, containing essential maintenance and repair instructions as well as electronics-related data.

ALL MAJOR MAKES

The database includes detailed information on all leading truck manufacturers in Europe.

DAF



Iveco



Isuzu



MAN



Mercedes Benz



Nissan



Mitsubishi



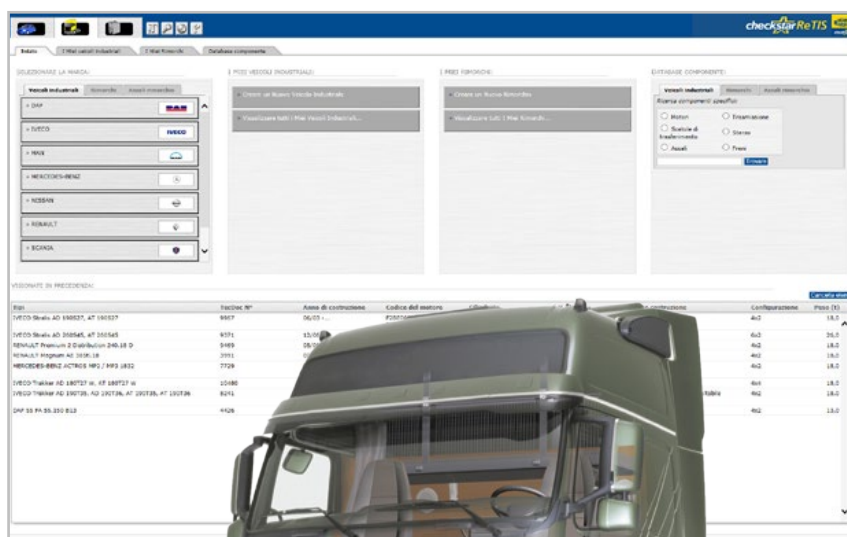
Renault



Scania



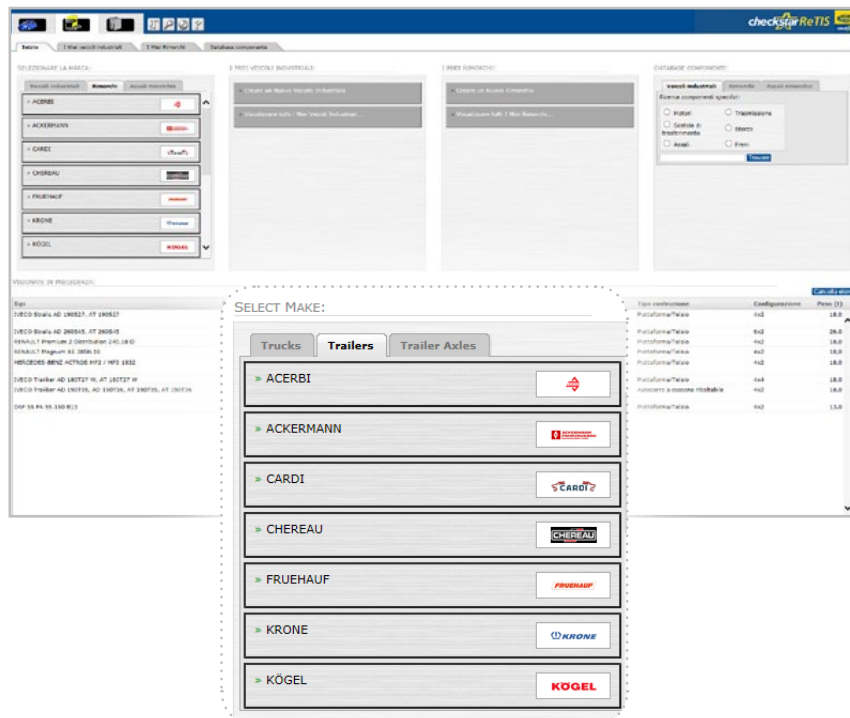
Volvo



WHAT'S A TRUCK WITHOUT A TRAILER?

As trucks are often used in combination with trailers, ReTIS Truck also includes information on trailers and axles.

This information, which is added on the basis of market feedback, allows you to service entire truck-trailer combination.



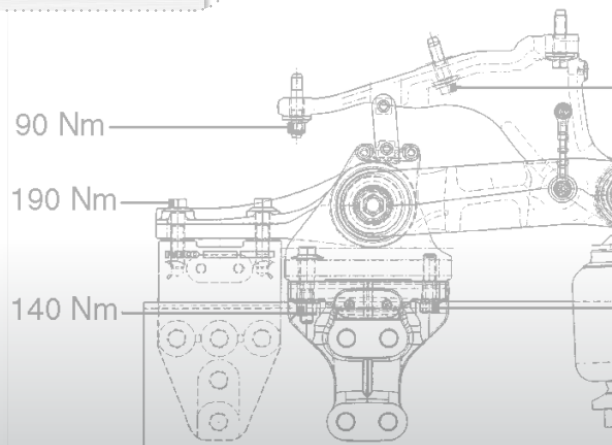
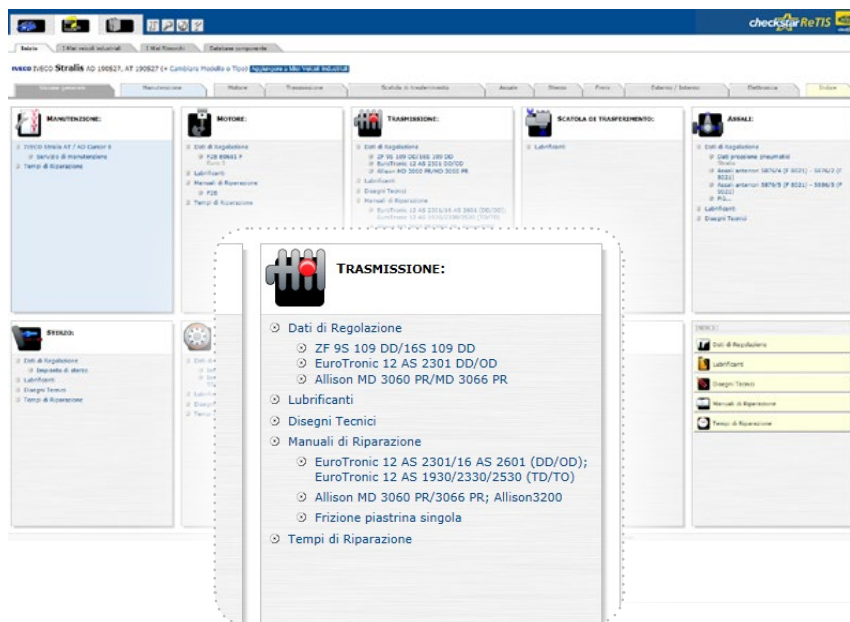
OVERVIEW

As both the database and the interface are derived from WorkshopData, ReTIS Truck users enjoy the same powerful features and unique benefits.

The Data

- Maintenance
- Engine
- Transmission
- Steering
- Brakes
- Axles
- Exterior/Interior
- Electronics

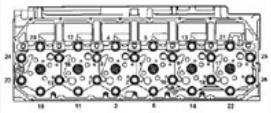
For each category, the user is presented with adjustment data, technical drawings, repair manuals and repair times, as well as information on service intervals and lubricants.



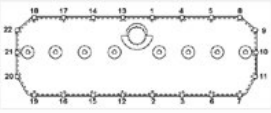
SUBJECTS

Adjustment data

Fuel system	
Fuel system	BOBC®
Injector type	LDN 3.3
Injector pressure	2300 bar
Injector pressure setting	280 - 290 bar
Torque settings: cylinder head	
Stage 1	60 Nm
Stage 2	120 Nm
Stage 3	120 Nm
Stage 4	120 Nm
Tighten in the order shown	60 °

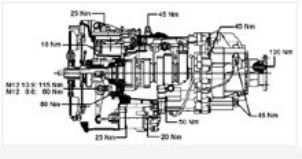


Torque settings engine general	
Crank pin - connecting rod cap bolts	40 Nm
Stage 1	60 °
Cylinder head - rocker shaft attachment	80 Nm
Stage 1	80 °
Stage 2	80 °
Locking nut for the rocker arm valve clearance adjustment bolt	10 - 15 Nm
Cylinder head cover attachment	10 Nm
Tighten in the order shown	



Exhaust manifold bolts/nuts

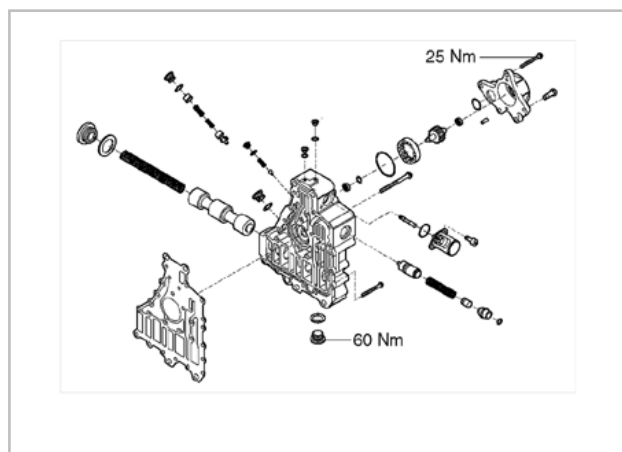
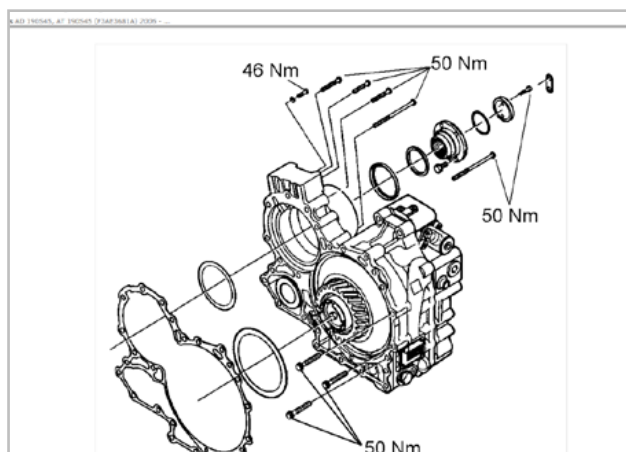
Transmission: EuroTronic 12 AS 1900 (12AS 2330) 12 AS 2530 (TD170) (+ Change Transmission)	
TRANSMISSION - ADJUSTMENT DATA	
Gearbox data	
Gearbox filling capacity	12 l
Gearbox with inter-tilt capacity	
First filling after repairs	21 l
Gearbox overview	



Clutch	
Over thickness	10 +/- 0.3 mm
F2B, F2A engine - new	10.4 +/- 0.3 mm
F2B engine - new	
Torque settings	
Attachment bolts - clutch release assembly to flywheel (pressure plate)	45 Nm
Attachment bolts/nuts - clutch housing to flywheel housing	45 Nm
Studs	25 Nm

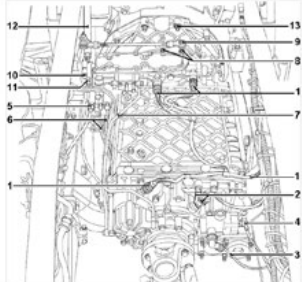
Propeller shaft data	
Torque settings	
Ring nut for fixing the flange to the propeller shaft	
M16 x 1.5	350 - 400 Nm
M20 x 1.5	300 - 400 Nm
Ball/nut, propeller shaft to flange connection on rear axle	
M20 x 1.5	450 Nm
Propeller shaft drive flange	135 Nm
Center/intermediate bearing housing bolts	11 Nm

Technical drawings

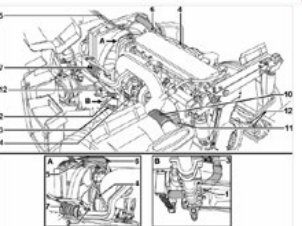


Repair manuals

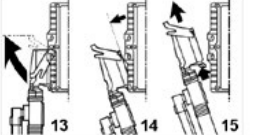
Remove the safety vest	2
Disconnect the connection(s)	3
Note: If applicable	
Disconnect the pipe(s)	4
Note: If applicable	
Disconnect the air pipe(s)	5, 6
Disconnect the clamp(s)	7
Remove the flange(s)	8
Disconnect the tie rod(s)	9
Note: air in the gearbox	
Remove the bolt(s)	10
Remove the gear lever	11
Note: Together with the tie rod	12
Remove the angles to gearbox bolts	13



Disconnect the air-conditioning line bracket	9
Remove the air hose between the turbocharger and the air filter	10
Disconnect the exhaust pipe(s)	11
Disconnect the engine supports	12



Disconnect the engine control unit connector(s)	13, 14, 15
---	------------



Drain the power steering fluid	16, 17
Disconnect the connection(s)	18, 19

UNIQUE FEATURES (CONTINUED)

My Truck and My Trailer

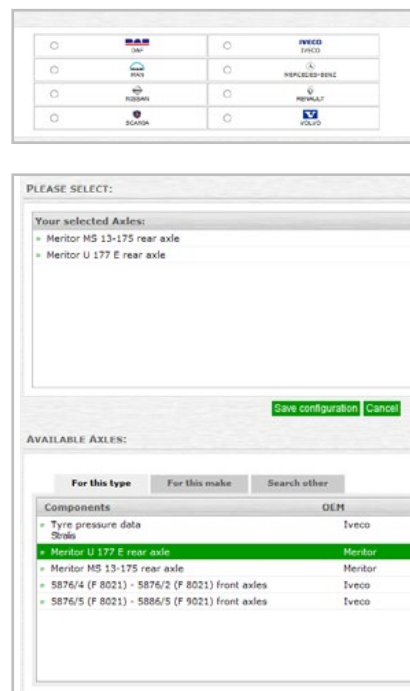
ReTIS Truck allows the user to build a custom truck or trailer from the various components stored in the database. The truck or trailer can subsequently be stored for future reference alongside all relevant data.

The ReTIS Truck “Parts Memo” feature

Trucks and trailers are usually constructed from such

Selected component: Parts memo		
YOUR ADDED PARTS AND NOTES		
Group	Description	Aftermarket Part Number
> Engine	Unique part	12345
> Engine	Accelerator cable	6789
> Engine	Water drain valve	D1304
> Brakes	Accessory kit, brake pad	BR123

a wide range of different components that sometimes the manufacturers (OEM) themselves are unable to advise workshops about the exact parts used on a truck or trailer. The mechanic often needs additional information, such as dimensions, colour, brand, version, etc. “Parts Memo” allows users to keep track of specific parts, together with their specifications/characteristics and any other relevant information.

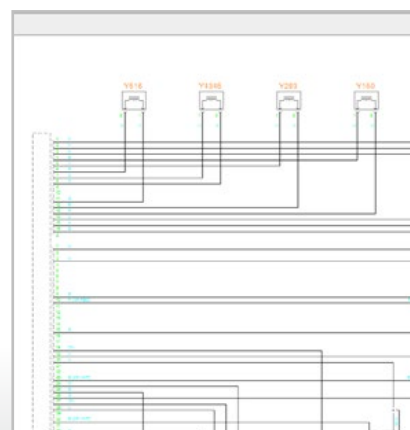


Leading the way in wiring diagrams



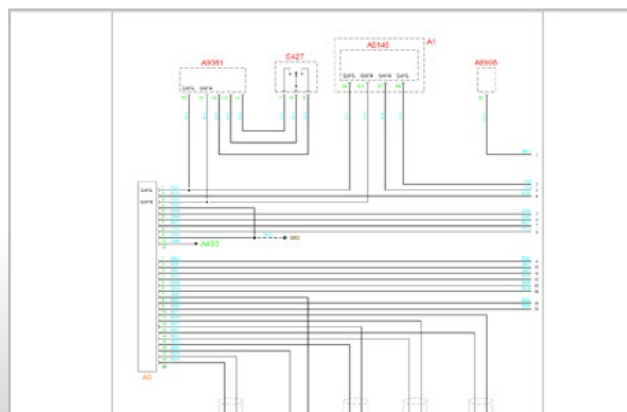
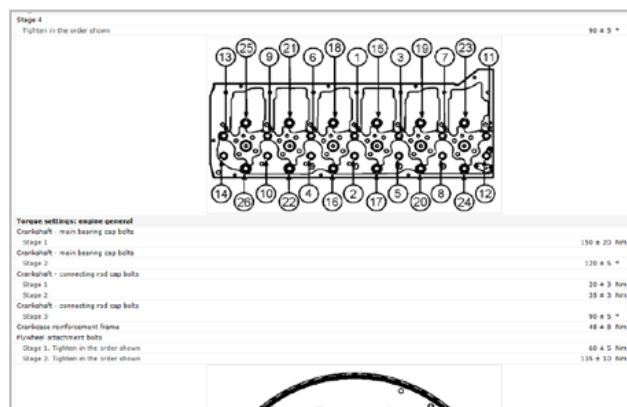
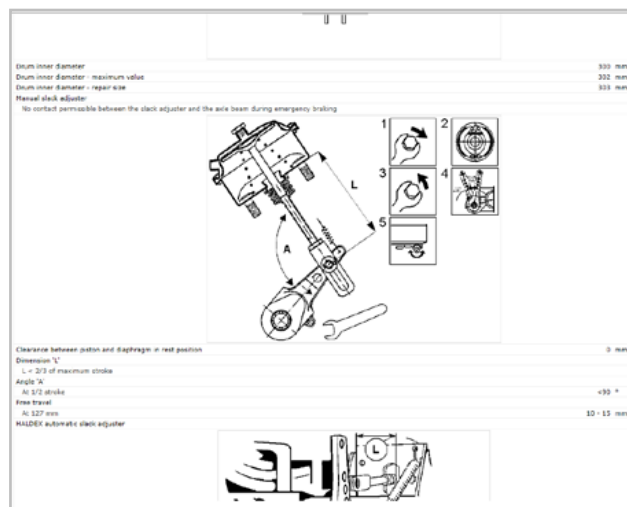
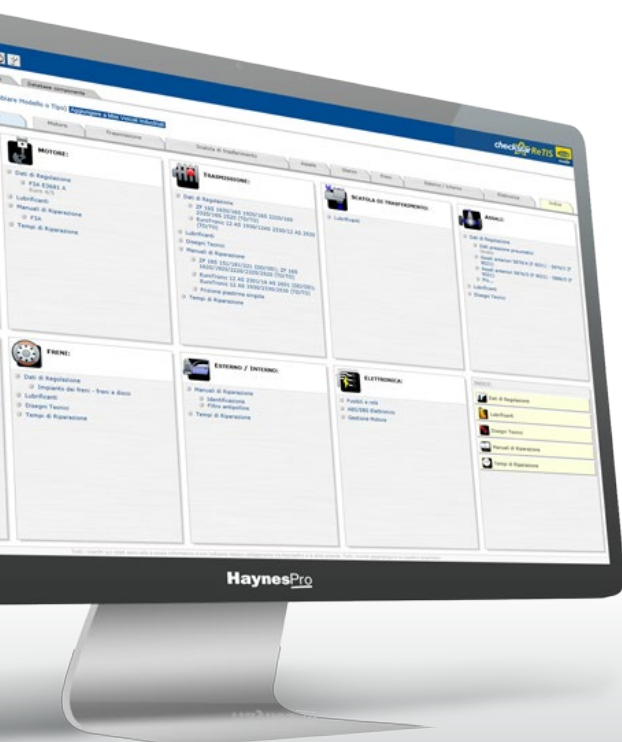
ReTIS Truck was the first data provider in Europe to offer ABS data and engine management wiring diagrams for trucks. This information is now included in ReTIS Truck for all major models and types. In fact, we currently offer the most comprehensive set of wiring diagrams in the market.

All diagrams use standard symbols, are available as full-colour vector graphics, and can be easily printed.



WHAT MAKES RETIS TRUCK SPECIAL?

- The best price/quality ratio in the market;
- All data in conformity with the OEM documentation
- Contains data on Trailers and Axles
- Seamless integration options with parts catalogues
- Including wiring diagrams on ABS and Engine Management



MORE INFORMATION

Magneti Marelli
After Market Parts and Services S.p.A.

Viale Aldo Borletti 61/63, 20011 Corbetta (MI)
 Tel. +39 02 97227284, Fax +39 02 97227500

www.magnetimarelli-checkstar.it